



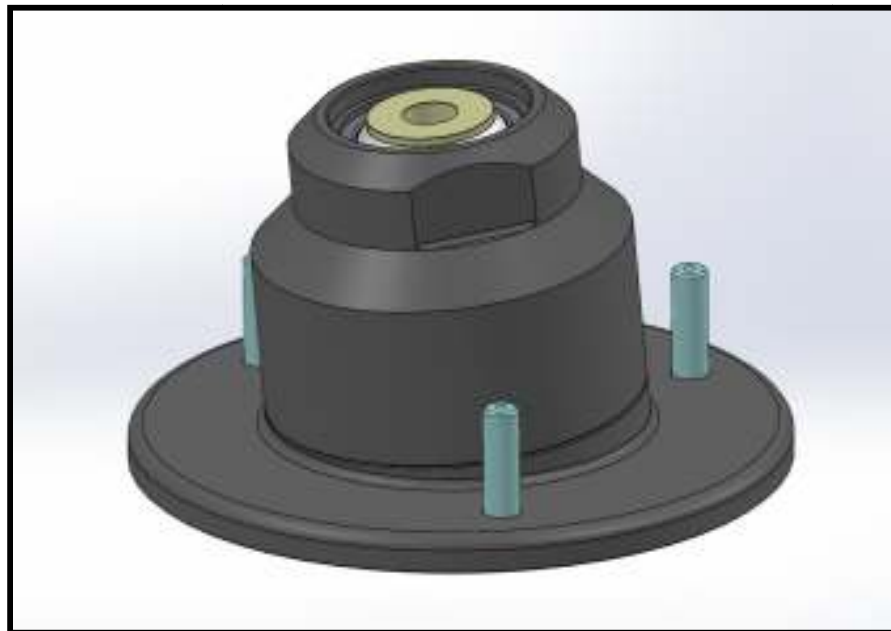
986 / 987 Rear Upper Strut Mount- Installation Instructions

Part #2152216

Cars applicable:
986 / 987 All Models

Parts list:

Quantity	Description
2	Rear Upper Strut Mount assemblies
6	M8 Locking Nuts
6	M8 washers



986 / 987 Rear Upper Strut Mount

Tools Required:

- 22mm wrench
- 13mm wrench open end
- 13mm socket
- 7mm Allen Key

Introduction:

Congratulations on your selection of the Elephant Racing 986 / 987 rear upper strut mount kit! The Elephant Racing rear upper strut mounts for the 986 / 987 are designed to accommodate any factory length rear strut. Common applications supported by this upper mount include, but are not limited to, factory style replacement struts, Von Coilovers ,Bilstein PSS9 coilovers, and JRZ RS series coilovers.



These mounts use high strength hardened steel spherical bearings and are direct replacements for the factory plates which use compliant rubber bushings. The teflon lined spherical bearings used in our kit are entirely maintenance free and require no supplemental lubrication. These mounts also have seals installed in order to prevent contamination from water or grime, thus extending bearing life. This makes the Elephant Racing rear upper shock mount perfect for regular street use, as well as extended abuse on the race track.

Configurations:

This kit can be used in one of the configurations as listed below. Please follow the installation steps for your specific application:

1. Stock or "lowering" springs
2. Factory strut coilover conversion with 2.5" springs
3. Bilstein PSS9 coilovers with Bilstein supplied springs
4. Coilovers with factory length struts and custom rate springs

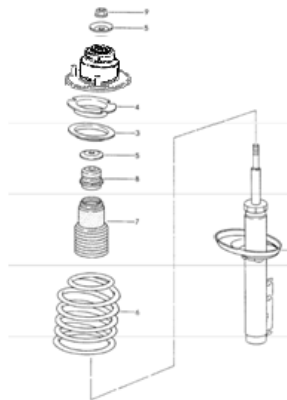
Step-by-Step Installation -

1- Remove the factory upper mount from the car. Refer to an appropriate shop manual for instructions.

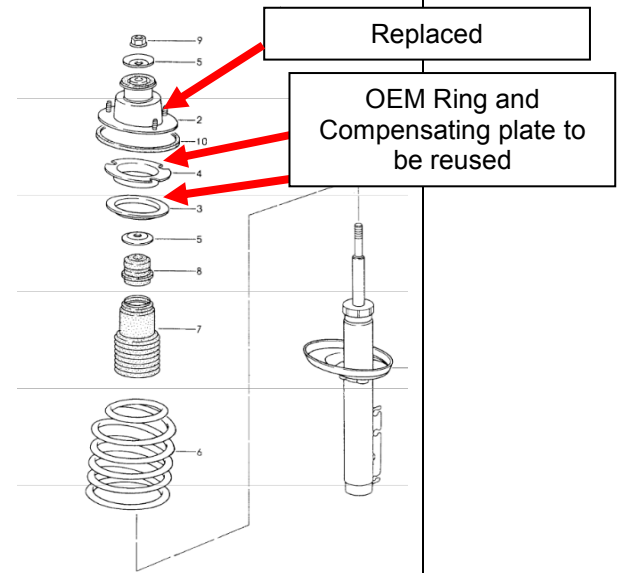
2 – Stock or Lowering Springs

Remove the factory Ring(Item 4 in diagram) and compensating plate(Item 3 in diagram) and from the factory supporting mount(Item 2 in diagram). The factory Ring and compensating plate will be used with the Elephant Racing Upper strut mount. Install the Elephant Racing Upper Strut Mount with the chosen springs. Ensure the cutouts on the factory ring align with the stud heads on the bottom of the Rear Upper Strut Mount.

NEW Assembly



OEM Assembly



Coilovers

For coilover setups utilizing factory length struts (For example Von coliovers), an upper spring perch must be used to focus the load on the center Rear Upper Strut Mount

In addition to the configurations previously mentioned, Elephant Racing can provide all the necessary components to mate with your unique coilover configuration not expressly called out in these instructions.



Bilstein PSS9 coilovers with Bilstein provided springs

The PSS9 kit includes a spring seat that must be used when using the Bilstein provided springs. Installation should be treated like a factory mount.





3- Install top nut and torque prior to installing the strut assembly back onto the car. Refer to shop manual for instructions and torque specifications.

4 – Install the strut assemblies in the vehicle.